



Appendix 1

# **Corporate Parenting Report**

## **October 2011**

Children Looked After  
Children Subject to a Child Protection Plan

(Activity to end of August 2011)

# CONTENTS

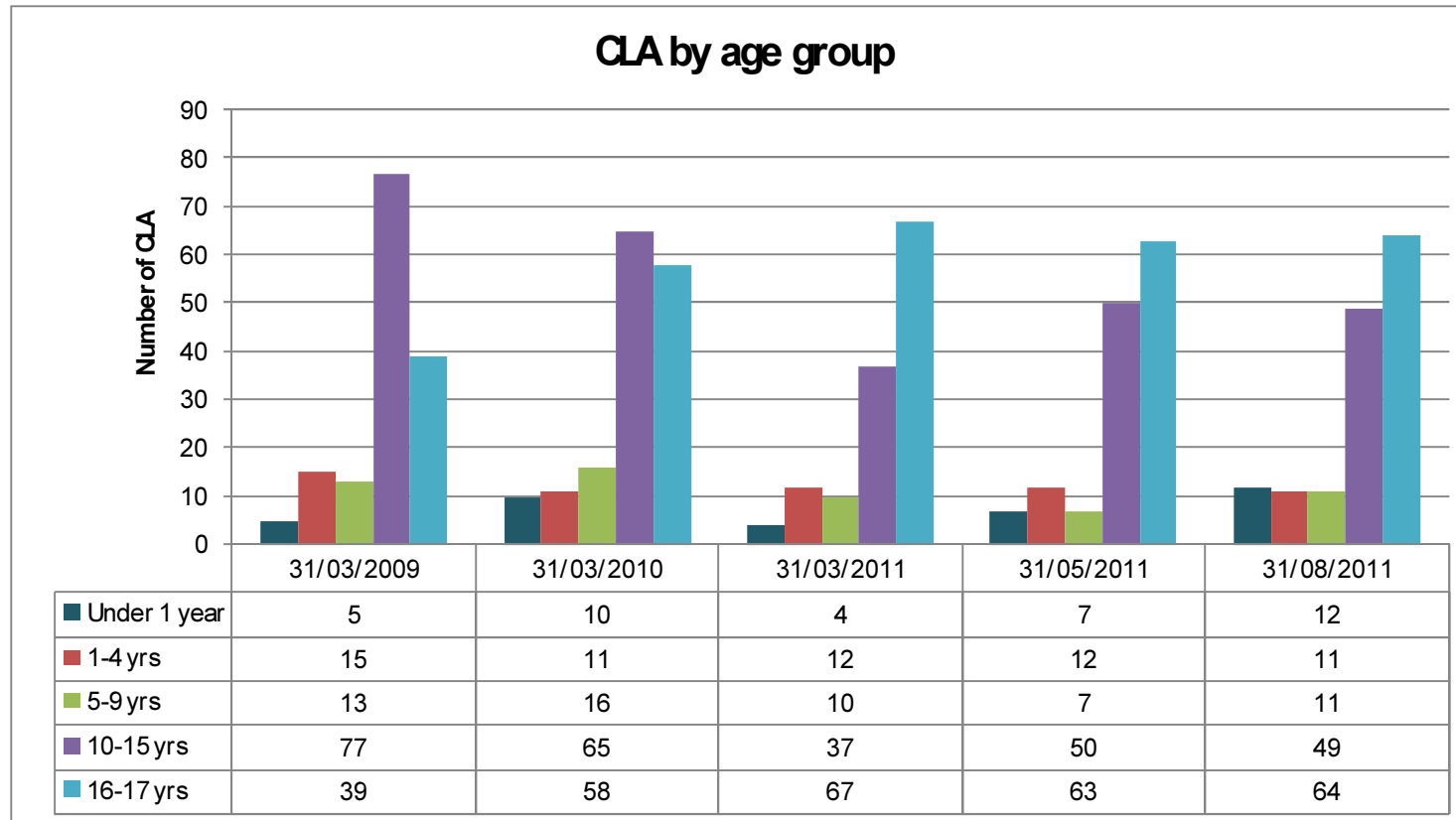
<b>PART A: CHILDREN LOOKED AFTER (CLA)</b> .....	<b>3</b>
<b>1) CLA BY AGE</b> .....	<b>3</b>
<b>2) CLA BY ETHNICITY</b> .....	<b>4</b>
<b>3) CLA BY PLACEMENT TYPE</b> .....	<b>5</b>
<b>4) CLA BY CATEGORY OF NEED</b> .....	<b>6</b>
<b>5) CLA - OTHER DATA:</b> .....	<b>7</b>
<b>6) CLA EDUCATIONAL ATTAINMENT:</b> .....	<b>7</b>
<b>PART B: CHILDREN SUBJECT TO A CHILD PROTECTION PLAN (CPP)</b> .....	<b>8</b>
<b>7) CPP BY AGE</b> .....	<b>8</b>
<b>8) CPP BY ETHNICITY</b> .....	<b>9</b>
<b>9) CPP BY CATEGORY OF ABUSE</b> .....	<b>10</b>
<b>10) CPP BY DURATION OF PLAN</b> .....	<b>11</b>
<b>PART C: ADDITIONAL INFORMATION</b> .....	<b>12</b>
<b>11) NUMBERS OF CLA &amp; CPP</b> .....	<b>12</b>
<b>12) KEY PERFORMANCE INDICATORS FOR THE END OF AUGUST 2011</b> .....	<b>13</b>

## Part A: Children Looked After (CLA)

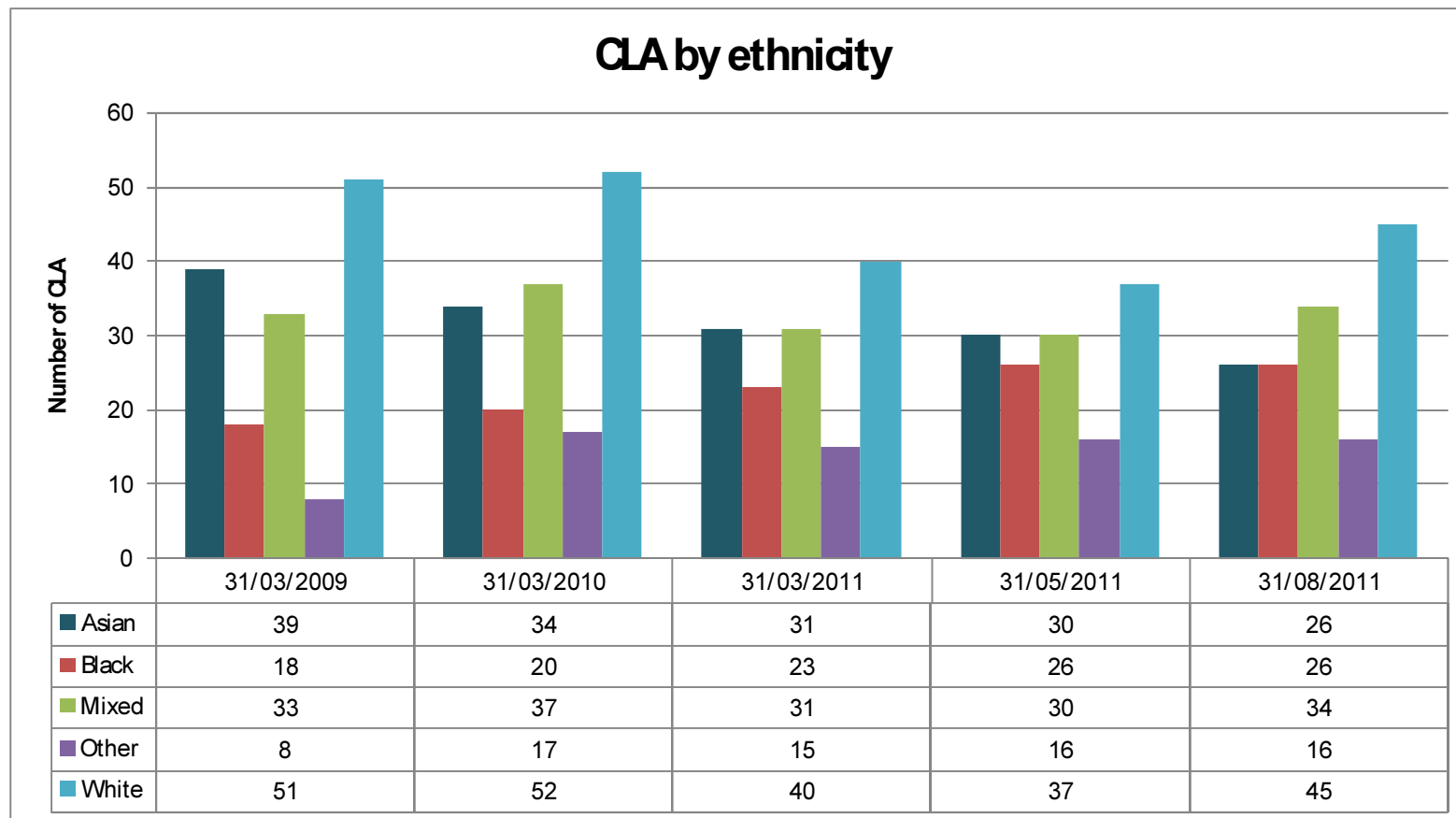
There were 147 CLA in Harrow on 31 August 2011.

There were also an additional 5 children receiving respite care / short term breaks (these are not included in the numbers in this report).

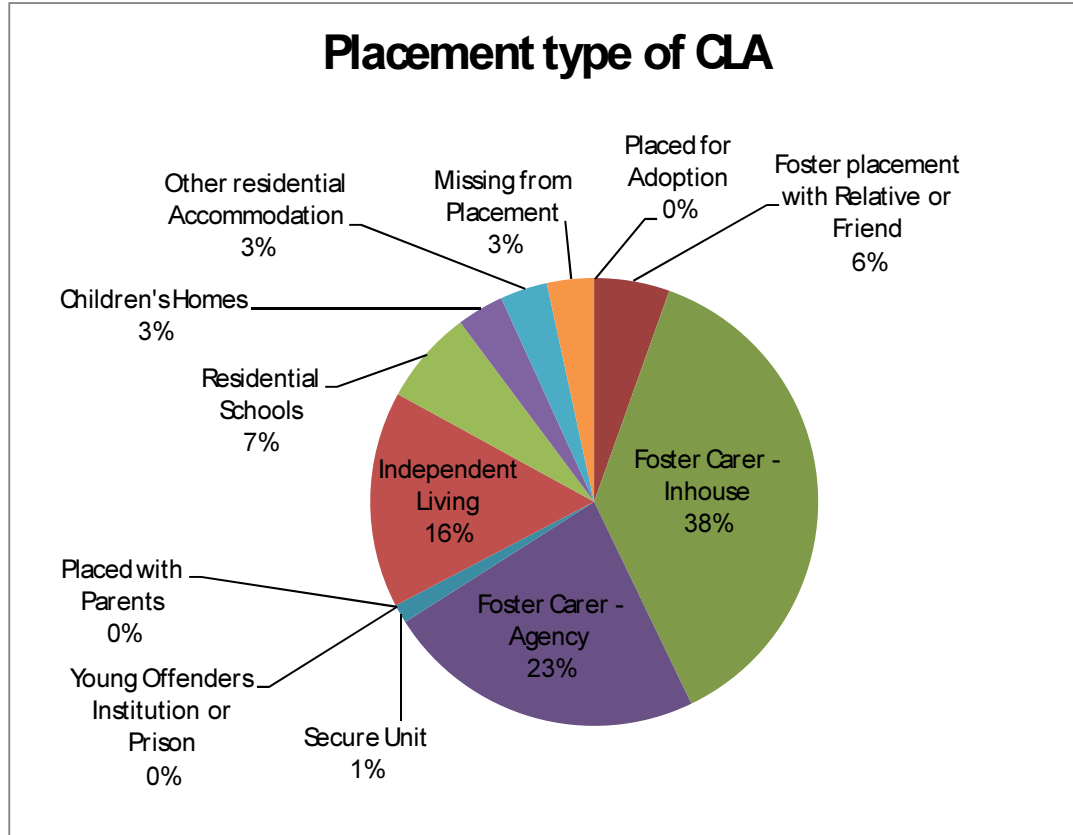
### 1) CLA by Age



## 2) CLA by Ethnicity



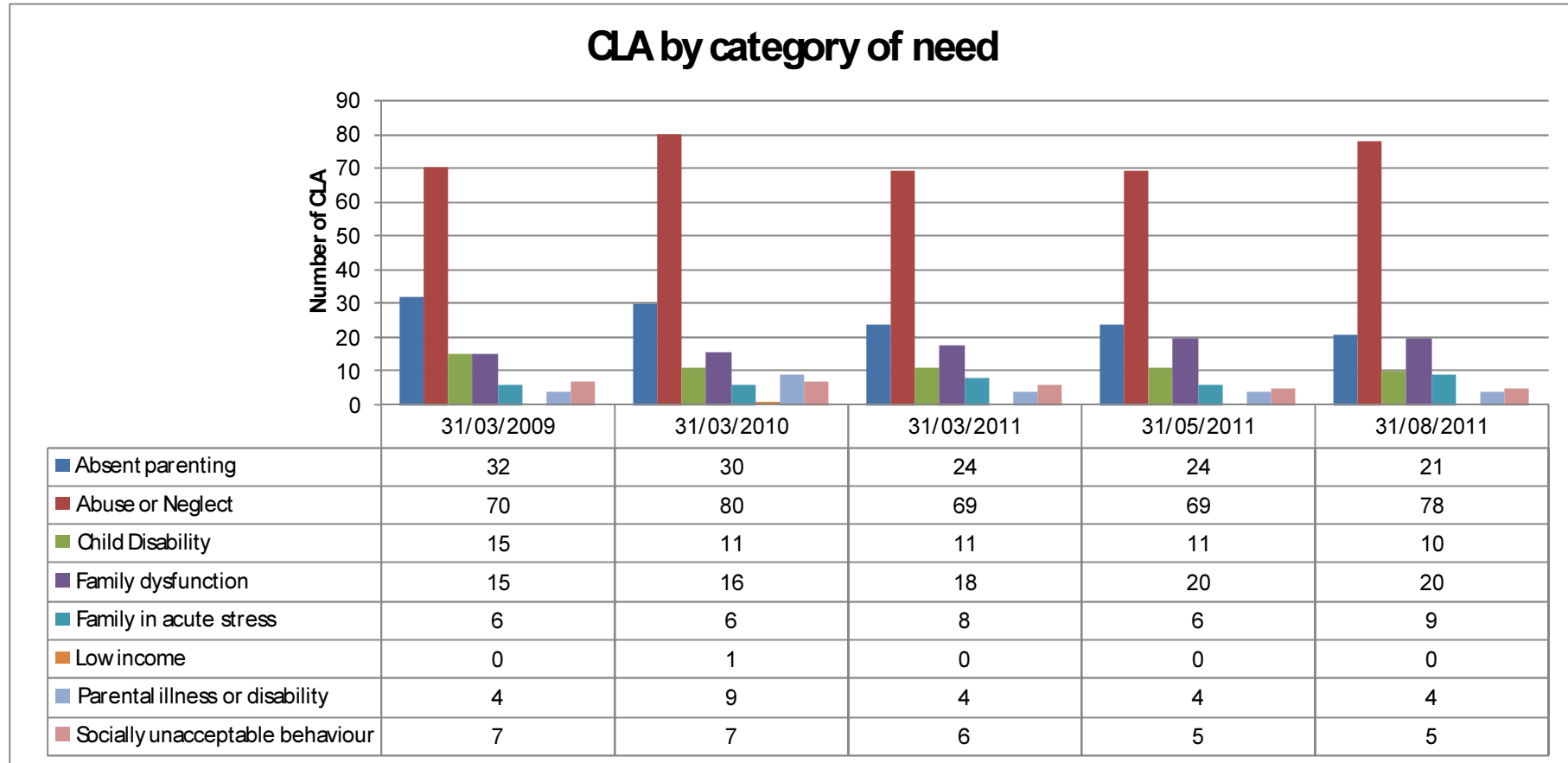
### 3) CLA by Placement Type



Placement Type	
Placed for Adoption	0
Foster placement with Relative or Friend	8
Foster Carer - Inhouse	55
Foster Carer - Agency	34
Secure Unit	2
Young Offenders Institution or Prison	0
Placed with Parents	0
Independent Living	23
Residential Schools	10
Children's Homes	5
Other residential Accommodation	5
Missing from Placement	5
<b>Grand Total</b>	<b>147</b>

#### 4) CLA by Category of Need

The breakdown of category of need as recorded when a child becomes looked after.



## 5) CLA - Other Data:

	<b>28 Feb 2010</b>	<b>31 May 2010</b>	<b>31 Aug 2010</b>	<b>30 Nov 2010</b>	<b>31 Jan 2011</b>	<b>31 Aug 2011</b>
Number of children placed out of borough:	66	68	81	70	71	74
Of those, who are placed more than 20 miles:	25	28	31	32	33	31
Social Work Allocation:	99.4%	100%	100%	100%	100%	99.7%
Adoptions & Special Guardianship Orders: (our target for adoptions is 14)	11 to date	13 for 2009-10	15 to date	16 to date	19 for 2010-11	5 to date

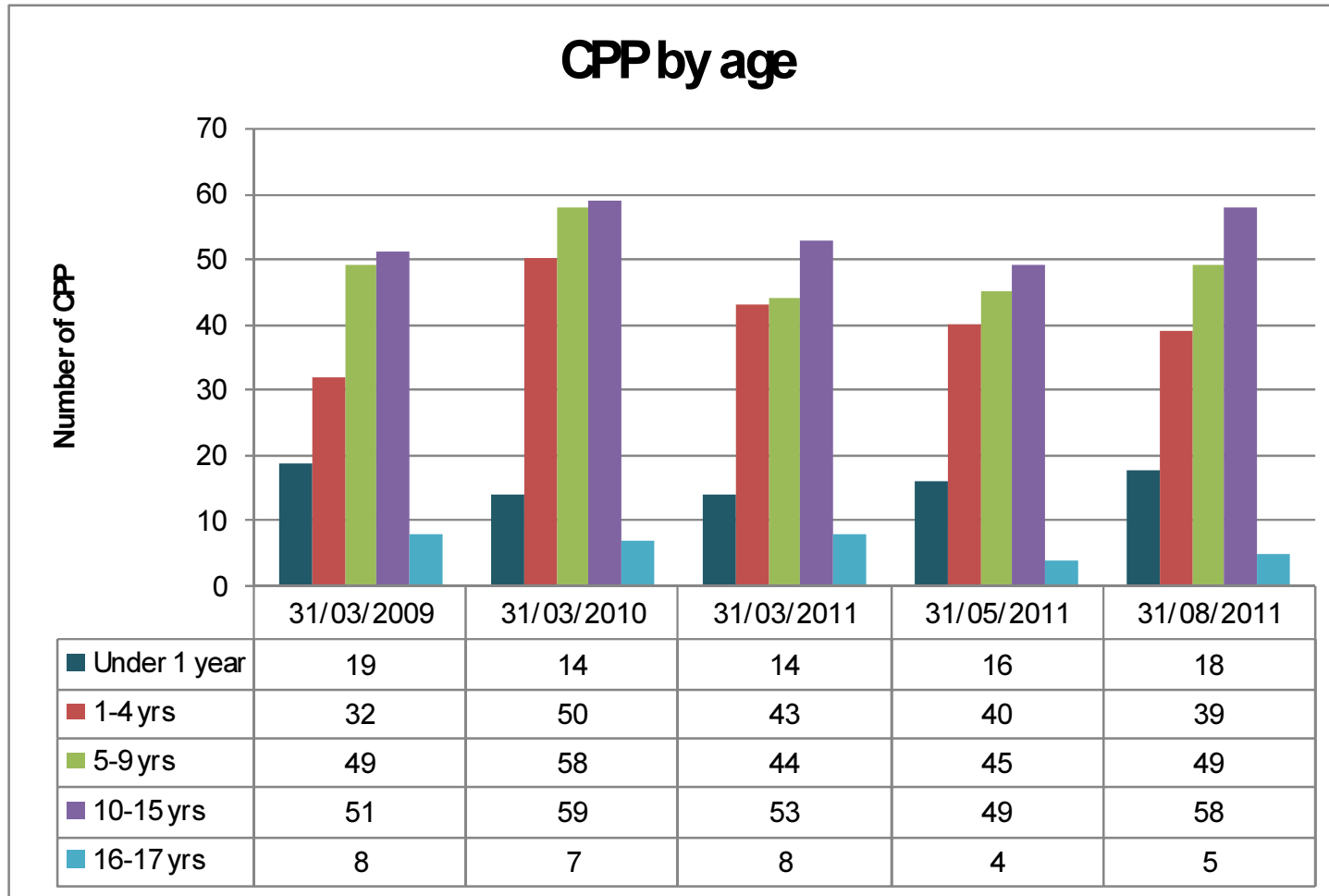
## 6) CLA educational attainment:

<b>(Clients looked after for over a year at 31/03/11)</b>	<b>2007</b>	<b>2008</b>	<b>2009</b>	<b>2010</b>	<b>2011 (prov)</b>
Total children in KS2 cohort:	8	7	2	2	2
Attained at least Level 4 in Maths at end of KS2	25%	43%	50%	50%	tbc
Attained at least Level 4 in English at end of KS2	50%	43%	50%	50%	tbc
Total young people in GCSE cohort:	13	9	14	17	19
GCSE: Attained at least 1 A* - G	46.2%	66.7%	57.1%	52.9%	47.4%
GCSE: Attained 5 or more A* - G	43.2%	33.3%	57.1%	41.2%	31.6%
GCSE: Attained 5 or more A* - C	5.4%	11.1%	14.3%	11.8%	5.3%
GCSE: Attained 5 or more A* - C inc Eng. & Maths		new	7.1%	11.8%	5.3%

## Part B: Children Subject to a Child Protection Plan (CPP)

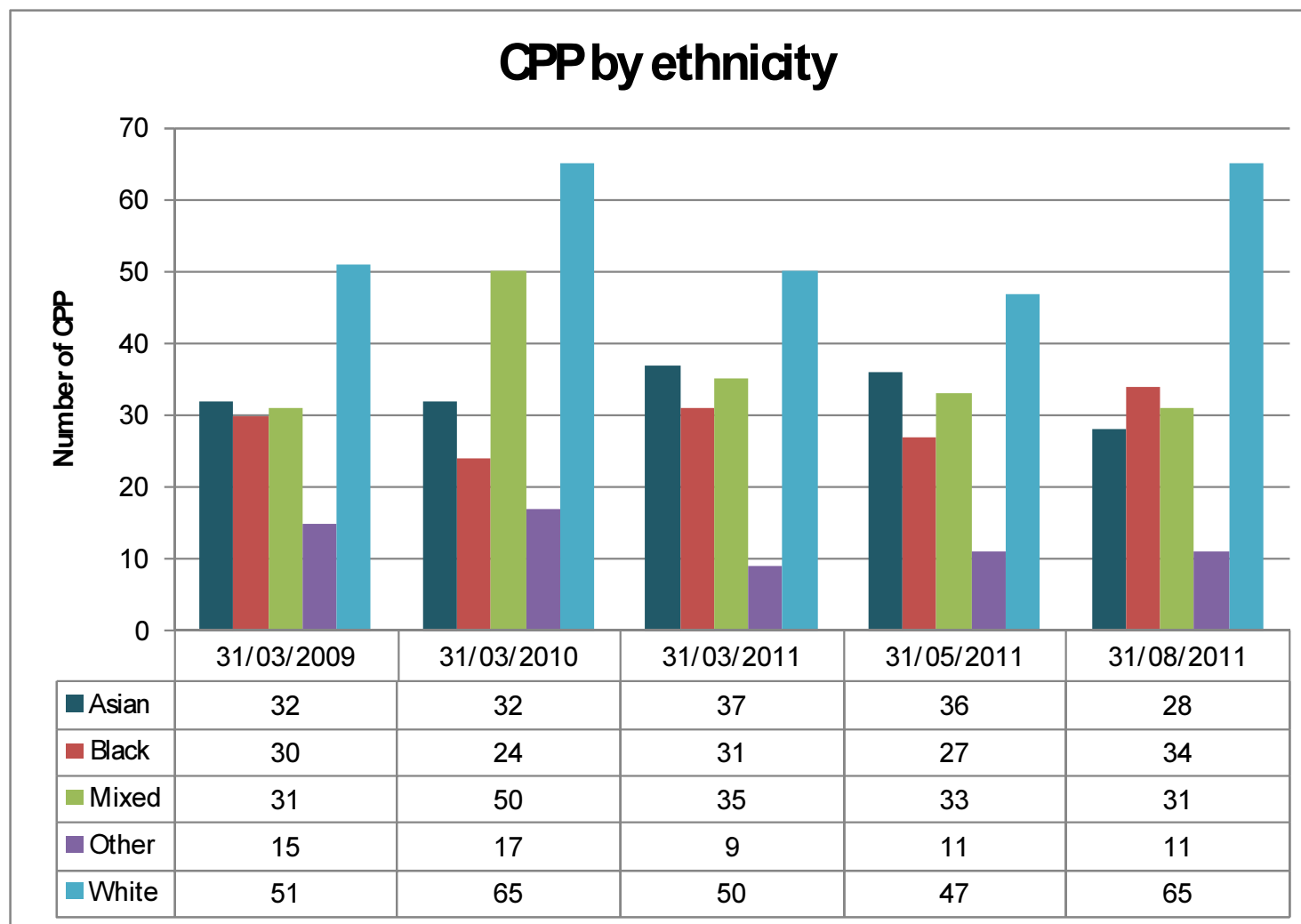
There were 169 children who were subject to a Child Protection Plan in Harrow on 31 August 2011.

### 7) CPP by Age

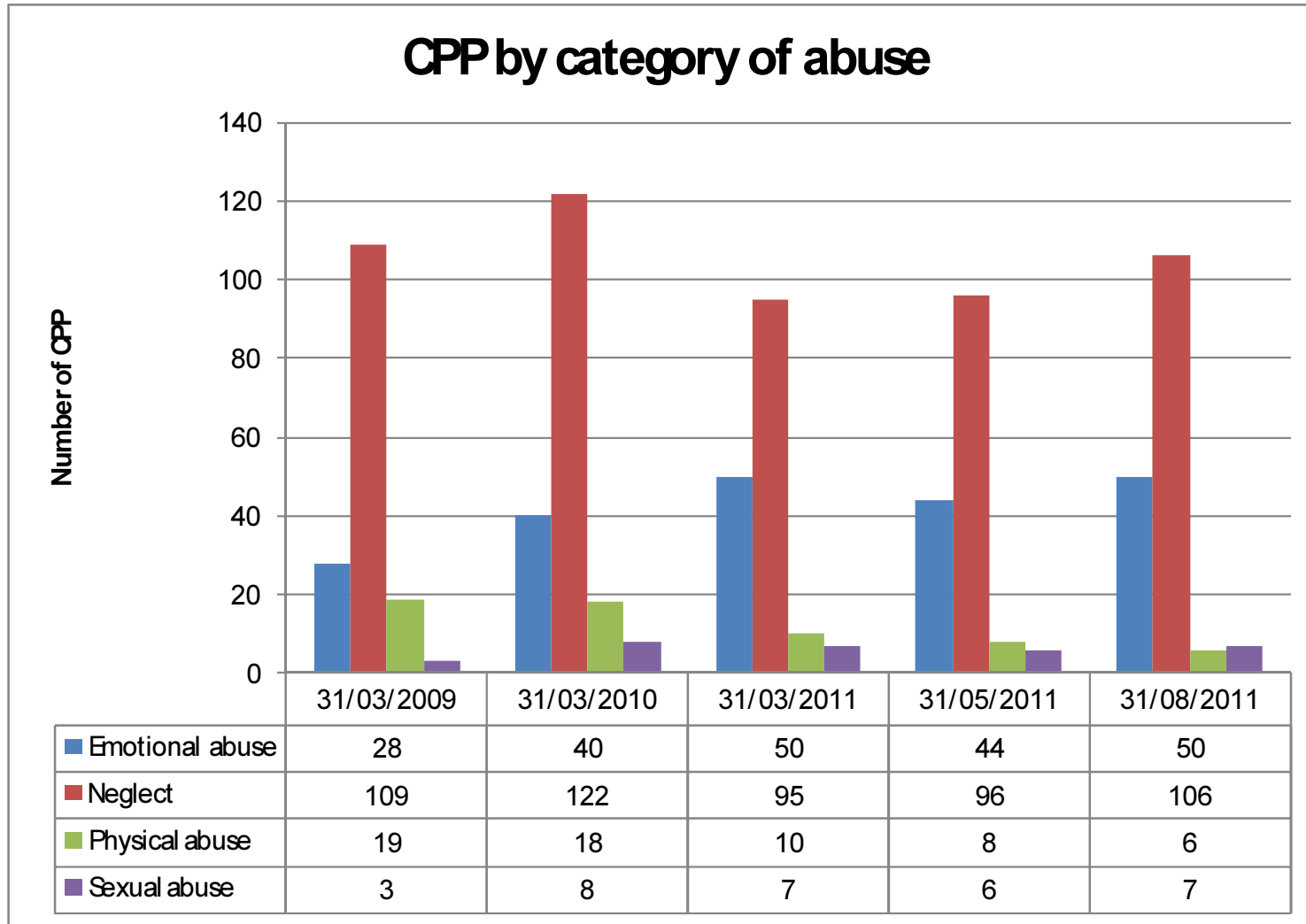




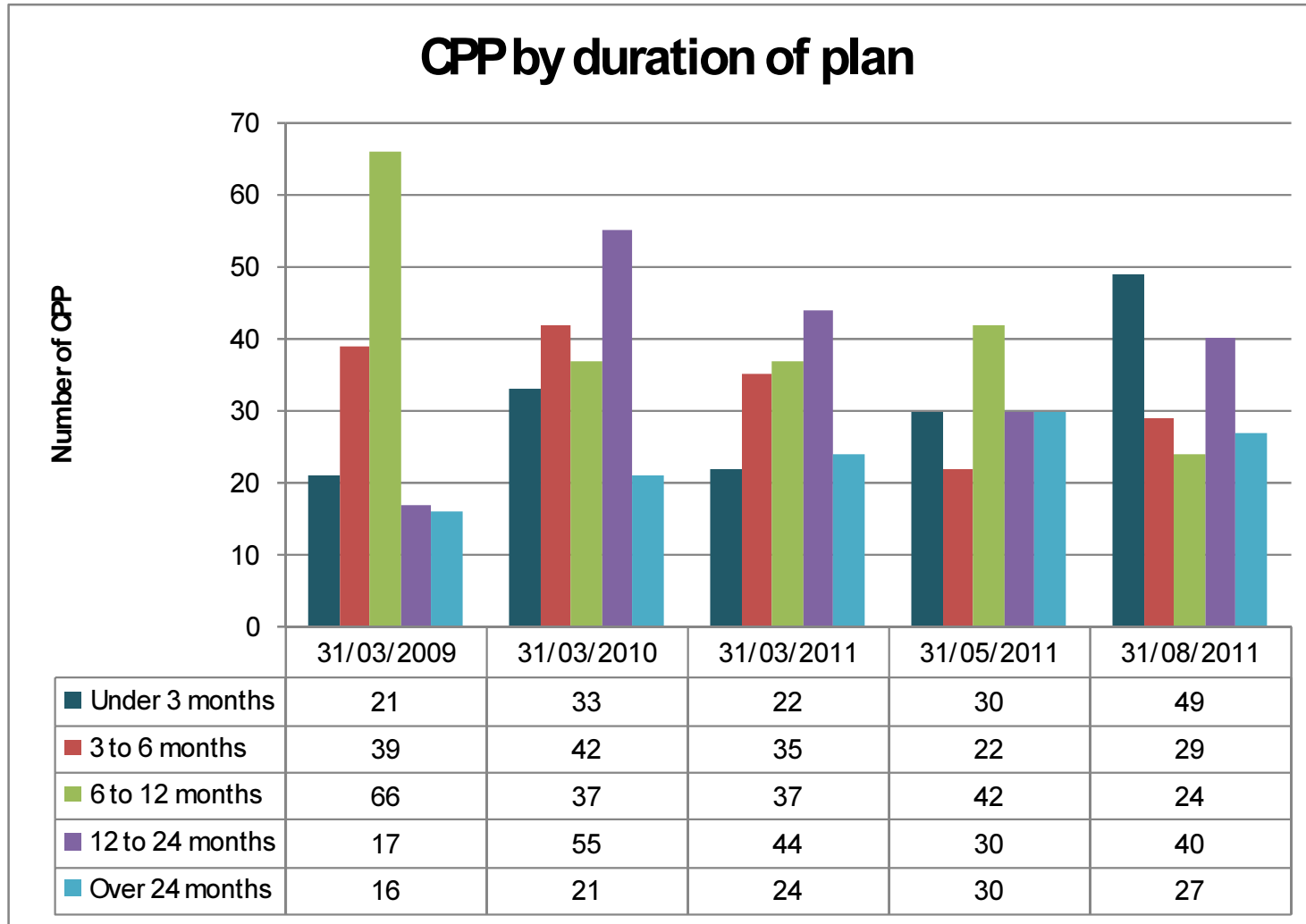
## 8) CPP by ethnicity



9) CPP by Category of Abuse

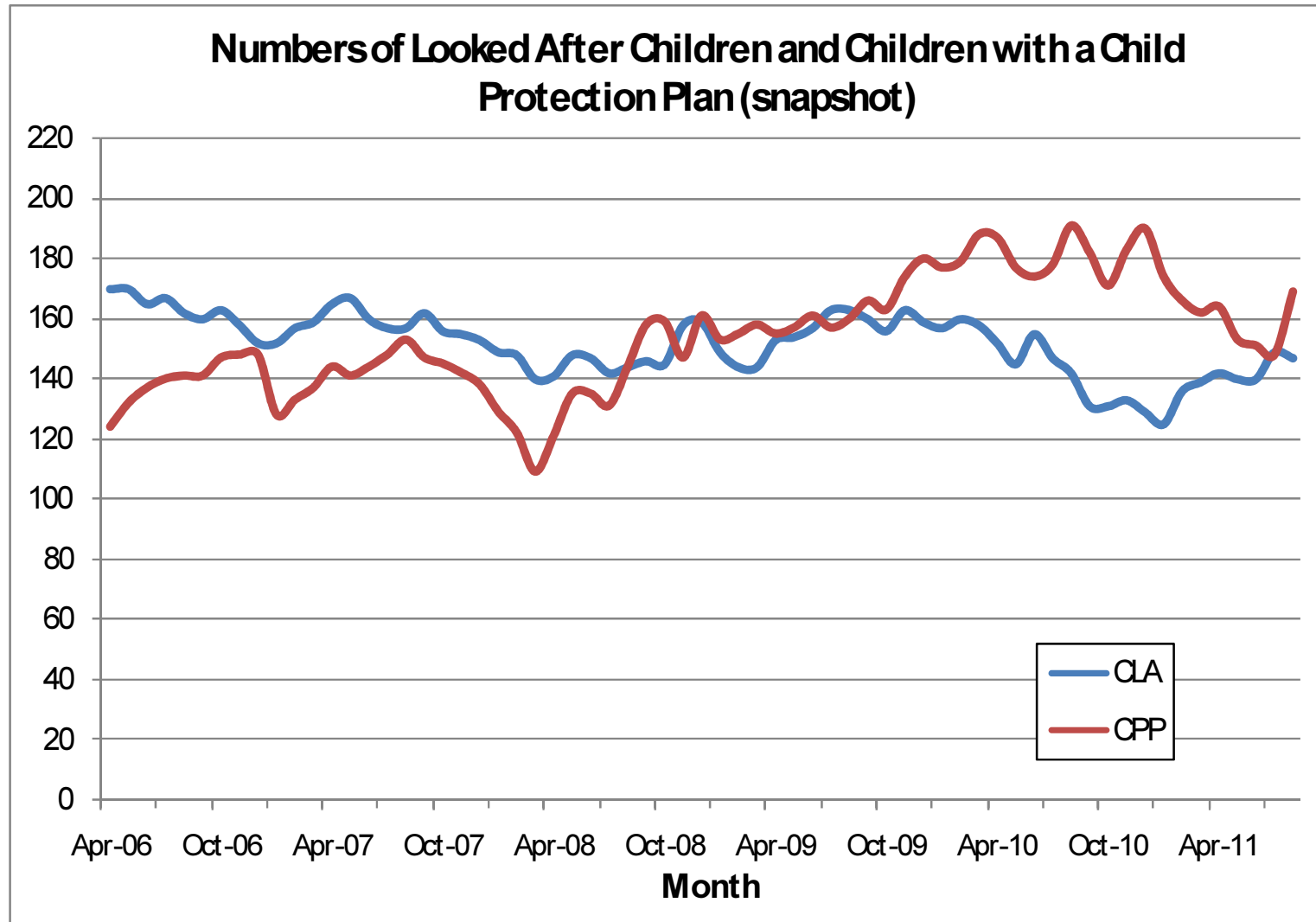


10) CPP by duration of plan



## Part C: Additional Information

### 11) Numbers of CLA & CPP



## 12) Key Performance Indicators for the end of August 2011

Prev. NI Ref:	Indicator Description	Polarity	Harrow target 2010/11	Harrow actual 2010/11	RAG Status 10/11	Harrow target 2011/12	Harrow actual Q1 2011/12	LAPS Q1 Average	LAPS Top Quartile	Direction of Travel	RAG Status
60	Timing of Core Assessments (NI 60 / PAF C64)	▲	82%	80.5%	A	83%	92.11%	74.4	87.74	↑	HG
61	Stability of LAC adopted following an agency decision	▲	80%	83.3%	LG	80%	100%	84.3	100	↑	HG
62	Stability of Placements of CLA (BV49 / PAF A1)	▼	10%	15.0%	HR	2.75%	2.86%	7.8	2.89	↔	LG
63	Long term stability of CLA (2.5 years) (NI 63 / PAF D78)	▲	68%	66.7%	A	68%	69.23%	71.4	75.7	↔	LG
64	Duration on the Child Protection Register (PAF C21)	↔	10%	17.2%	HR	12%	16.28%	9.4	5.15	↓	HR
65	Re-registrations on the CP Register (PAF A3)	↔	10%	8.8%	HG	10%	0%	10.9	5.95	↑	HG
66	Timeliness of Reviews of Looked After Children (PAF C68)	▲	100%	96.8%	A	100%	100%	96.9	99.78	↔	LG
67	Reviews of Child Protection cases (BV 162 /PAF C20)	▲	100%	100.0%	LG	100%	100%	99	100	↔	LG
68	% of CiN referrals that led to initial assessments	↔	75%	50.3%	HR	75%	49.58%	69	83.35	↓	HR
71	Children who have run away from home/care overnight	▲	13	13	LG	13	13	12	13	↔	LG
147	Care leavers in suitable accommodation (5037SC)	▲	88%	91.7%	LG	88%	100.00%	95.2	99.3	↑	HG
148	Care leavers in employment, education or training	▲	75%	66.7%	HR	75%	66.67%	59.2	77	↓	HR
	The Health of Children Looked After (PAF C19)	▲	95%	90.6%	A	95%	84.71%	Local	Local	↓	LR
59	Initial assessments completed within 10 days (NI 59)	▲	100%	85.5%	HR	85%	90.91%	78.1	85.4	↑	HG
	% of children looked after in residential accommodation	▼	20%	20.9%	A	20%	17.14%	Local	Local	↑	HG
	Adoptions of Children Looked After (BV 163 / PAF C23)	↔	14%	22.6%	HR	3.5% (Q1)	2.38%	Local	Local	↔	LR
	% of CLA allocated to a qualified Social Worker	▲	100%	99.0%	A	100%	100%	Local	Local	↔	LG

Prev. NI Ref:	Indicator Description	Polarity	Harrow target 2010/11	Harrow actual 2010/11	RAG Status 10/11	Harrow target 2011/12	Harrow actual Q1 2011/12	LAPS Q1 Average	LAPS Top Quartile	Direction of Travel	RAG Status
	Children Looked After Absent from School (PAF C24)	▼	12%	20.8%	HR	12%	20.78%	Local	Local	↓	HR
	Participation of CLA in Reviews (PAF C63)	▲	95%	94.1%	A	95%	97.50%	Local	Local	↑	HG
	Percentage of CLA with permanent exclusions amongst school age CLA, in quarter	▼	New	New	New	0% (prov-Summer)	0% (Summer)	Local	Local	↑	HG
	Percentage of CLA with fixed term exclusions amongst school age CLA, in quarter	▼	New	New	New	5% (prov - Summer)	6.49% (Summer)	Local	Local	↓	HR
	Percentage of sessions absent from school amongst school age CLA, in school year to date	▼	New	New	New	12% (prov - YTD)	14.47%	Local	Local	↓	HR

Direction of travel: This is a judgement on the actual data in each quarter.	
↑	performance has improved
↓	performance has deteriorated
↔	performance remains the same

RAG Status	
HR	Needs prompt attention
LR	Poor
A	Adequate
LG	Good
HG	Excellent